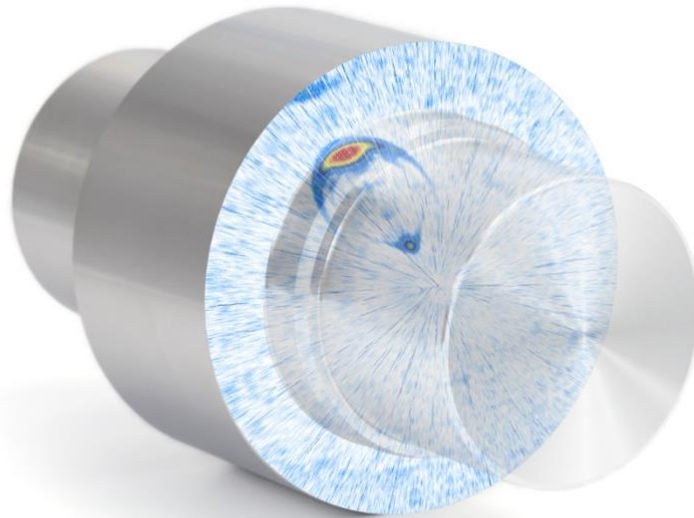


# **TomoView 2.10R25**

## **Release Notes**



This document is the exclusive property of Olympus NDT inc. No part of this document may be used or reproduced entirely or in part without the prior written consent of Olympus NDT inc.

# Table of Contents

---

<b>1. Introduction</b>	<b>4</b>
<b>2. What is TomoView?</b>	<b>4</b>
<b>3. New Features in TomoView 2.10</b>	<b>4</b>
3.1 OmniScan MX2 & SX – MXU 4.4R4 Data Files	4
3.2 Compatibility with Bootp 6.4R7	4
3.3 OmniScan MX2 & SX – MXU 4.3 Data Files	4
3.4 OmniScan MX2 & SX – MXU 4.2 Data Files	5
3.5 OmniScan MX2 – PA2 32:128 and 32:128PR modules support	5
3.6 NDT SetupBuilder law files support	5
3.7 OmniScan MX2 – PA2 & UT2 modules data files support	5
3.8 OmniScan SX data files support	5
3.9 Data file size increased to 2 GB	5
3.10 Conditional A-Scan functionality	5
3.11 Matrix Filters functionality	5
3.12 Multiple length Software C-Scan functionality	6
3.13 TCG Curves import/export from .csv files	6
3.14 TomoViewer TOFD analysis tools support	6
3.15 MS5800 smoothing filters support	6
<b>4. Existing Features Improvements in TomoView 2.10</b>	<b>6</b>
4.1 Binarizer feature improvements	6
4.2 C-Scan saving mode	6
<b>5. Requirements</b>	<b>6</b>
5.1 Computer	6
5.2 Supported Windows Operating System	7
5.3 Dongle (Hardware Security Key)	7
<b>6. Languages</b>	<b>7</b>
<b>7. User's Manual</b>	<b>8</b>
<b>8. Compatibility with Previous Versions</b>	<b>8</b>
8.1 Installation	8
8.1.1 OmniScan Data Files	8
8.1.2 NDT Data Access Library 1.12 Installation	8
8.2 Files	8
<b>9. Installation Software and Bootp Server</b>	<b>9</b>
<b>10. Features no longer supported</b>	<b>9</b>
This document is the exclusive property of Olympus NDT inc. No part of this document may be used or reproduced entirely or in part without the prior written consent of Olympus NDT inc.	

<b>11. Changes.....</b>	<b>9</b>
<b>12. Bug Fixes .....</b>	<b>10</b>
12.1 TomoView 2.10R25 .....	10
12.2 TomoView 2.10R24 .....	10
12.3 TomoView 2.10R20 .....	10
12.4 TomoView 2.10R18 .....	10
12.5 TomoView 2.10R17 .....	10
12.6 TomoView 2.10R16 .....	10
12.7 TomoView 2.10R14 .....	11
12.8 TomoView 2.10R13 .....	11
12.9 TomoView 2.10R12 .....	11
12.10 TomoView 2.10R9 .....	12
12.11 TomoView 2.10R8 .....	12
12.12 TomoView 2.10R7 .....	12
12.13 TomoView 2.10R6 .....	12
12.14 TomoView 2.10R5 .....	13
12.15 TomoView 2.10R3 .....	13
12.16 TomoView 2.10R2 .....	13
12.17 TomoView 2.10R1 .....	13
12.18 TomoView 2.9R13 .....	15
12.19 TomoView 2.9R12 .....	16
12.20 TomoView 2.9R11 .....	17
12.21 TomoView 2.9R5 .....	17
12.22 TomoView 2.9R3 .....	20
12.23 TomoView 2.9R2 .....	21

This document is the exclusive property of Olympus NDT inc. No part of this document may be used or reproduced entirely or in part without the prior written consent of Olympus NDT inc.

# 1. Introduction

---

This document contains information related to the newly released edition of TomoView 2.10R23.

- For more information on the related NDT Remote Control Library and NDT Data Access Library versions, refer to the corresponding release notes.

## 2. What is TomoView?

---

- TomoView is a PC-based software for data acquisition with the following units:
  - TomoScan FOCUS LT (standard or rackmount)
  - OmniScan MX with PA1 and UT1 modules, OmniScan MX2 with PA1, PA2 (32:128 and 32:128PR) and UT1 modules
  - TomoScan FOCUS, Tomoscan III PA,  $\mu$ Tomoscan™ and MultiScan MS5800 (UT only)
- ▶ **Important Note: TomoView does not support the OmniScan iX for data acquisition.**
- TomoView is a PC-based software for UT data visualization and reporting for data acquired with the following units:
  - TomoScan FOCUS LT (standard or rackmount)
  - OmniScan MX with PA1 and UT1 modules (version 2.0R2 or higher), OmniScan MX2 with PA1, PA2, UT1 and UT2 modules and OmniScan iX
  - TomoScan FOCUS, Tomoscan III PA,  $\mu$ Tomoscan™ and MultiScan MS5800 (UT only)

## 3. New Features in TomoView 2.10

---

The following new features were introduced in TomoView 2.10.

### 3.1 OmniScan MX2 & SX – MXU 4.4R4 Data Files

Starting from TomoView 2.10R24, OmniScan MX2 and SX data files generated with MXU 4.4R4 will be supported.

### 3.2 Compatibility with Bootp 6.4R7

Starting from TomoView 2.10R21, Tomoview is now compatible with Bootp 6.4R7

### 3.3 OmniScan MX2 & SX – MXU 4.3 Data Files

Starting from TomoView 2.10R19, OmniScan MX2 and SX data files generated with MXU 4.3 will be supported.

This document is the exclusive property of Olympus NDT inc. No part of this document may be used or reproduced entirely or in part without the prior written consent of Olympus NDT inc.

### **3.4 OmniScan MX2 & SX – MXU 4.2 Data Files**

Starting from TomoView 2.10R17, OmniScan MX2 and SX data files generated with MXU 4.2 will be supported.

### **3.5 OmniScan MX2 – PA2 32:128 and 32:128PR modules support**

Starting from TomoView 2.10R12, the OmniScan MX2 equipped with a PA2 32:128 and 32:128PR modules can be used in inspection mode. Note that the OSTV PA2 1.0R1 software must be installed on the instrument storage card for this mode to be supported.

### **3.6 NDT SetupBuilder law files support**

Starting from TomoView 2.10R12, law files generated with the NDT SetupBuilder software can be imported in TomoView.

### **3.7 OmniScan MX2 – PA2 & UT2 modules data files support**

Starting from TomoView 2.10R4, data files generated using an OmniScan MX2 with PA2 and UT2 modules will be supported by TomoView. These data files can be associated with MXU 3.2 or higher OmniScan MX2 software versions.

### **3.8 OmniScan SX data files support**

Starting from TomoView 2.10R6, data files generated using an OmniScan SX will be supported by TomoView.

### **3.9 Data file size increased to 2 GB**

The maximum data file size has been increased to 2 GB in TomoView 2.10, allowing larger parts to be inspected in a single acquisition.

### **3.10 Conditional A-Scan functionality**

The Conditional A-scan allows the A-scans to be recorded only when an alarm is triggered. This allows the A-scans to be contained only in the areas where this information is important, allowing the user to inspect much larger areas in a single inspection.

### **3.11 Matrix Filters functionality**

The Matrix Filters tool can be used to reduce noise on C-scan data by processing data points using the surrounding points. The Matrix Filters are particularly useful when analyzing noisy composite parts, therefore allowing clearer data representation for analysis of data files with high noise levels.

This document is the exclusive property of Olympus NDT inc. No part of this document may be used or reproduced entirely or in part without the prior written consent of Olympus NDT inc.

### 3.12 Multiple length Software C-Scan functionality

Using the Software C-scan Editor which now allows custom geometries to be edited from the originally acquisitioned data, the zone of interest can be customized in analysis, therefore giving you much more flexibility when inspecting complex geometries.

### 3.13 TCG Curves import/export from .csv files

The TCG curves can now be easily imported from or exported to .csv files for more flexibility in custom TCG curves configurations.

### 3.14 TomoViewer TOFD analysis tools support

Starting from TomoView 2.10R6, the TOFD analysis tools will be available in the TomoViewer version. A new layout has also been designed to make the TOFD analysis process easier with this version.

### 3.15 MS5800 smoothing filters support

Starting from TomoView 2.10R6, the MS5800 acquisition unit will support the smoothing filters.

## 4. Existing Features Improvements in TomoView 2.10

---

### 4.1 Binarizer feature improvements

The following improvements were made to the Binarizer feature in order to make its behavior more consistent for *NDT Data Access Library* software integration:

1. When binarizing position data, TomoView will set the binarized position C-Scan data to either *30ns after the beginning* or the *end* of the corresponding Gate.
2. When binarizing amplitude data, TomoView will set the binarized amplitude C-Scan data to either *0.005%* or *100%*.
3. When an error code is Binarized, it is kept as is and not converted to another value.

### 4.2 C-Scan saving mode

The C-Scan data is now saved using the last point acquired on each pixel of the inspected part. This will ensure the coherence between the acquired A-Scan and C-Scan data.

## 5. Requirements

---

### 5.1 Computer

The followings are the minimum computer requirements to install TomoView 2.10:

This document is the exclusive property of Olympus NDT inc. No part of this document may be used or reproduced entirely or in part without the prior written consent of Olympus NDT inc.

- Computer and processor 500 megahertz (MHz) processor or higher
- Memory 2 gigabyte (GB) RAM or higher (4 GB RAM recommended for large data files and high-speed acquisition)
- 100 gigabyte hard disk (GB) for optimal performance in analysis and acquisition
- Interface USB port for HASP software protection device
- A 1280 x 1024 display or higher resolution monitor
- Network 100 megabits Ethernet adaptor for acquisition mode
- Keyboard and mouse

Additional actual requirements and product functionality may vary based on system configuration and operating system.

## 5.2 Supported Windows Operating System

TomoView 2.10 supports the Windows 2000, XP, Vista, 7 and 8 Operating systems.

- For Windows XP, Service Pack 3 is required.
- For Windows Vista, also note that most common editions of Vista are supported but the user account control (UAC) mode is not supported.
- For Windows 8, the computer must be connected to internet when performing the installation so that the .NET framework 3.0 can be installed.

## 5.3 Dongle (Hardware Security Key)

► **Important Note: It is now required to plug the dongle into the PC at all times.**

The dongle is now required to be plugged in even when you connect to an acquisition unit (TomoScan FOCUS LT, OmniScan,  $\mu$ Tomoscan, MultiScan MS5800, Tomoscan III, etc.). It is, however, not required to have a dongle to install the software on a PC.

With the order of TomoView Inspection, two (2) dongles are delivered instead of one (1) as with the previous software versions. One dongle is activated for the Inspection mode TomoView Inspection, and the second dongle is activated for the Analysis mode (TomoView–Analysis).

With the order of TomoView Analysis, only one (1) dongle is delivered.

## 6. Languages

---

- TomoView is available in English, French, and German and Chinese.
- TomoViewer is available in English only.
- Inspection reports are now generated in the language selected during installation.

This document is the exclusive property of Olympus NDT inc. No part of this document may be used or reproduced entirely or in part without the prior written consent of Olympus NDT inc.

## 7. User's Manual

---

A completed TomoView 2.10 revised user's manual is now available in English. German, French and Chinese versions will follow.

## 8. Compatibility with Previous Versions

---

### 8.1 Installation

TomoView 2.10 is compatible with the previous versions of TomoView (from TomoView 2.2 to TomoView 2.10). Both revisions can be installed on the same computer.

However, a specific Bootp configuration needs to be saved and reloaded for each software version. Before installing TomoView 2.10, save the Bootp configuration into a file (for instance bootp file TomoView2.7.cfg). Install TomoView 2.10 and save new Bootp configuration in another file (for instance bootp file TomoView2.10.cfg). Before turning on the acquisition units, load the proper file into the Bootp, and then click the restart button. You can now open the related version of TomoView.

Note: the Bootp shortcut is found in the configuration panel.

► *Important Note : You can be kept informed of the new TomoView 2.10 software version releases at the following link: <https://www.olympus-ims.com/en/service-and-support/downloads/subscribe/>*

#### 8.1.1 OmniScan Data Files

► *Important Note: To fully benefit from the new display features of TomoView, it is recommended to convert OmniScan data files with the new converter even though they were converted into an .rdt format using a previous version of the converter. The multibeam C-scan image can be displayed for any sector scan (multiple refracted beam angles or constant beam angles) only if the file was converted with the TomoView 2.10.*

#### 8.1.2 NDT Data Access Library 1.12 Installation

► *Important Note: In order to install the NDT Data Access Library 1.12 version (which will replace the NDT Data Access Library 1.11 version from TomoView 2.10R16), the NDT Data Access Library 1.11 should be fully uninstalled prior to the installation of the new version. The NDT Data Access Library enables the access to the raw data from OmniScan iX, MX, MX2 & SX (\*.oud and \*.opd) and TomoView (\*.rdt) data files.*

### 8.2 Files

Setup files and data files saved in a previous version of TomoView (higher than 2.2) can be loaded in TomoView 2.10 (using the same acquisition unit). In some cases, it might be necessary to rebuild the layout using the predefined display layout of TomoView 2.10.

This document is the exclusive property of Olympus NDT inc. No part of this document may be used or reproduced entirely or in part without the prior written consent of Olympus NDT inc.



► Set-up files or data files created in TomoView 2.10 should not be loaded into a previous version which could create software instability and unexpected behavior.

## 9. Installation Software and Bootp Server

---

It is no longer required to plug a dongle to install TomoView 2.10.

► Important Note: If you do not have a dongle when you open the TomoView launcher, only the TomoViewer edition will be enabled.

► Important Note: For TomoView 2.10R12 and higher, the installation disables the Microsoft network monitoring services to avoid network performance issues.

## 10. Features no longer supported

---

- Data Cursor is no longer available.
- For inspection, Independent position setup is not available.
- In setup mode, it is no longer possible to change the type of Group (Phased Array, TOFD or UT). Group type has to be defined when the group is created.

## 11. Changes

---

A few names have been changed in TomoView 2.10 from previous versions:

- Channel was renamed Group
- Focal Law was renamed Beam
- Sequence was renamed Scan
- Pane was renamed View
- Contour was renamed Zone tool
- Signal rectification possibilities were renamed
  - Not Rectified -> RF
  - Unipolar Positive -> HW+ (Positive Half Wave)
  - Unipolar Negative -> HW- (Negative Half Wave)
  - Bipolar -> FW (Full Wave)

A keyboard shortcut has also been changed:

- *CTRL + Drag* cursor label has been changed to *CTRL + SHIFT + Drag*.
- Bootp now comprises a monitor tool available in the windows task bar tray.

This document is the exclusive property of Olympus NDT inc. No part of this document may be used or reproduced entirely or in part without the prior written consent of Olympus NDT inc.

## 12. Bug Fixes

---

The following bugs were corrected for the different TomoView versions.

### 12.1 TomoView 2.10R25

- Minor display issue on international laptop causing cropping of screen was fixed.

### 12.2 TomoView 2.10R24

- Compatibility with MXU4.4R4 data files was fixed.

### 12.3 TomoView 2.10R20

- P30924 [Data] Incorrect TOFD data processing on MXU data files

### 12.4 TomoView 2.10R18

- P32866 [Omniscan File Converter] .opd converted files seems corrupted when doing TOFD processing
- P32873 - [Thickness C-scan] For .opd converted files, thickness B/-A/ is incorrect
- P29153 - [LawFile] Importing Law files doesn't correctly set the Velocity
- P32603 [Scan] Din 2 (rot. synchro) reset is not simultaneous for A-scan data and C-scan data

### 12.5 TomoView 2.10R17

- P24883 [NDTDataAccess][Converter] Fix for RF Amplitude C-Scan values
- P25049 [CONVERTER] Gate synchronization isn't imported correctly for OmniScan data file
- P29149 [Data][OmniscanConverter] WedgeDelay is incorrectly imported for MXU 4.1 data files
- P30044 [IndexOffset] Changing Probe Index offset offline affect the BeamIndex Offset value
- P30098 [DataAccess][TOFD] A-scan Amplitude trace doesn't match omniPC by a factor of 1.28 for \*.opd and \*.rdt files generated from Omniscan
- P30302 [Load old Data File] Impossible to load an older data file
- P32243 [OmniScan converter] Sound path gates start is not displayed correctly in A-Scan and S-scan

### 12.6 TomoView 2.10R16

- P24906: [BOOTP] Components are missing at the installation
- P24929: [A-scan][Export] Incoherence between displayed and TomoView exported RF A-scan data amplitude
- P26348: [Data] RF Amplitude value correction
- P26362: [PERFORMANCE] Focus LT freezes and no data or encoder signal is brought up
- P27509: [TCG] TCG points disappear when outside A-scan Range

This document is the exclusive property of Olympus NDT inc. No part of this document may be used or reproduced entirely or in part without the prior written consent of Olympus NDT inc.

- P27871: [UnitConversion] Scan and Index offsets conversion when switching unit to Degree
- P28061: [NDTDataAccess] Cannot open data file with its A01 complement file for RF data
- P28185: [WedgeUpdate][AdvCalc] Wedge filters give empty sub-selections
- P28363: [Bootp] Need to Restart the Bootp for the FOCUS LT to connect
- P28460: [AFiSiMO] Simulation isn't displayed
- P28831: [ZoneReadings] Top(C) zone reading is stuck at 98.4% and will not go higher
- P29149: [Data] Wedge Delay is incorrectly imported for MXU 4.1 data files
- P29153: [LawFile] Importing Law files doesn't correctly set the Velocity
- P29199: [DDF] TomoView crashes when using DDF
- P29245: [Skew][Analysis] Cannot change skew angle offline for UT groups
- P29566: Error when using Windows XP SP3
- P29728: [Converter] OmniScan converted Opd to Rdt that are loaded as setup show an innacurate error message
- P29770: [Advanced Calculator] Error message when opening Advanced Calculator
- P29771: [Launcher] TomoView 2.10R14 splash screen display issue
- P29835: [PostInspection] Impossible to perform Volumetric merge in Analysis after Inspection mode
- P29919: [Reading][12Bit][SoftGain] Some A% readings on A-scan and C-scan view are wrong above 100% after ajusting Soft Gain
- P30044: [IndexOffset] Changing Probe Index offset offline affect the BeamIndex Offset value
- P30098: [DataAccess] A-scan TOFD amplitude .opd to .rdt correction

## 12.7 TomoView 2.10R14

- P29770 [Advanced Calculator] Error message when opening Advanced Calculator
- Set encoders in TomoView through RCLIB unlocked in Inspection mode

## 12.8 TomoView 2.10R13

- P29008 Crash when loading specific setup files

## 12.9 TomoView 2.10R12

- P27509: [TCG] TCG points disappear in certain conditions
- P27858: [DATA] Missing warning that the Scan stop (and length) has been changed
- P28485: [Preferences] Remove option for old indication table option
- P27860: [DATA] Incorrect TOFD velocity
- P28211: [OVERLAY] Weld overlay doesn't work on Side (B) views
- P28216: [DATA] Incorrect OmniScan iX data when imported in TomoView
- P27443: [Presynchronization] Missing some validation when programming Gate in presynchronization causing error in from driver
- P28109: [DATA] "Minimum Amplitude" C-Scan merge doesn't work
- P27125: [OVERLAY] Weld overlay is lost when selecting the LITE WELD layout
- P28204: [CRASH] Crash when using the Binarizer on a data file in Inspection mode
- P28364: [REPORT] Incorrect and missing Gates information

This document is the exclusive property of Olympus NDT inc. No part of this document may be used or reproduced entirely or in part without the prior written consent of Olympus NDT inc.

- P27782: Reading only of LAW file version 5.2
- P27859: Alarms should be available for consulting during the Inspection
- P28445: Importing TCG is ~100x slower than calibrating (using 10laws)
- P28889: Corrected bug when sending more than 32 laws to program in PA2 mode with OmniScan MX2
- P28942: add save law file in 5.0 or 5.2 versions from the Advanced Calculator.
- P27443: Missing some validation in TomoView when programming Gate in presynchronization causing error in FPGA or Driver
- Corrected TCG bug when importing phased array TCG configuration file

## 12.10 TomoView 2.10R9

- P28404: New version of NDT Data Access Library that allows TomoView to convert OmniScan data files

## 12.11 TomoView 2.10R8

- P28089: C-scan doesn't acquire the data correctly after an index change in raster scan with  $\mu$ TomoScan
- P28060: [DATA] Saturated RF signals are treated as "No Detection"
- P28127: No signal go through Gate A but C-scan of Gate A display 100% Amplitude

## 12.12 TomoView 2.10R7

- P27437: [Calibration] Skew is reversed to 90deg after a SingelBeamCalibration on a 270deg Skew
- P27318: [DISPLAY] All views disappears when creating C-Scan merge view
- P27573: Change interface label and button size to see correctly German translation
- P27438: [ClosingCrash][SNR] TomoView crashes when trying to close it after displaying the SNR Analysis Utility
- P27561: Include new OmniViewer and LITE WELD layouts
- P25201: [VIEWS] Polar Views are not generated correctly for "bar" parts
- P27664: [Lite Weld] TomoView can't open in Lite Weld layout mode
- P27434: [TCG] TCG is only activated for the first focal law when adding Law to Default setup
- P27715: [CONVERTER] Can't select layout when converting OmniScan data file
- P27712: Cannot convert / open a MX2 file (.opd) with latest version
- P27752: [DISPLAY] "RF Symmetrical palette" is automatically rechecked when unchecked

## 12.13 TomoView 2.10R6

- P26947, P26956, P26957: fix file already open for bug
- P26957: fix open file with TOFD spec from bug 26957
- P26974: Fix Gates disappear when being changed from the S-Scan
- P27064: Crash with the conditional A-Scan - Added critical section to remove risk of concurrent
- P26926: "No data" is converted to "No detection" when merging certain data files

This document is the exclusive property of Olympus NDT inc. No part of this document may be used or reproduced entirely or in part without the prior written consent of Olympus NDT inc.

- P26483: BeamIndex offset isn't imported correctly from OmniScan data file
- P26956: Advanced Calculator information is lost... (Error Reading File, File already open)
- P26926: Fix "No data" is converted to "No detection" when merging certain data files
- P27360: fix Smoothing filter not set on load setup
- P26482: fix calibration in half path
- P27391: Fix 2.10R6T3 installer doesn't include latest KeyTool version
- P26947: Fix Fails to reload Default setup
- P27440: Fix Missing reading groups in the indication table

## 12.14 TomoView 2.10R5

- P26950: Incorrect TOFD groups recognition by TomoView

## 12.15 TomoView 2.10R3

- P24481: TomoView memory leak fix

## 12.16 TomoView 2.10R2

- P25530 fix Wedge delay Calibration TOFD
- P25536 fix save .law file in v5.2 from AdvancedCalculator210
- P18371 fix Cylindrical correction for the readings for all views
- P25481 fix Thickness when for B/-I/ on imported OmniScan files
- P24703: fix crash when moving gate in linear merge mode.
- P24379: fix by adding the new function 'GetDataGroupMode' in DataAccess to get the data group mode.
- P24705: fix Matrix filters mode should never be available during the inspection.
- P24726: fix by supporting NDT SetupBuilder law file v5.2 in TomoView.
- P22353: fix 2 'View' menu in Aero mode, one is now Toolbars menu.
- P25208: fix crash when generating a report preview with a lot of indicators.
- P24899: fix conditional A-scan by keeping the max C-scan amplitude. This is done by make sure all C-scan match A-scan.
- P24744: fix A-Scan Video usage causes TomoView to crash.

## 12.17 TomoView 2.10R1

- P23728: Customer cannot open A01 file.
- P22325: Customer cannot connect with their program.
- P22327: VB: Read Data sample does not display data
- P23464: Invalid symbols in Multiple Lengths setup
- P23310: Invalid conditional A-Scan state in report
- P23376: Add RC events for conditional memory size warning
- P23845: Open TCG files can't be imported
- P23920: Soft C-Scan created with multiple lengths does not correspond to soft ....
- P22137: Automatic naming for sequence is not used in dependent setup

This document is the exclusive property of Olympus NDT inc. No part of this document may be used or reproduced entirely or in part without the prior written consent of Olympus NDT inc.

- P22140: POSITION DEPENDENT SETUP-Test merger button stay available when a dependent setup run is ongoing
- P23467: : TOMOVIEW 2.10 Readings in amplitude are not accurate
- P23846: Wrong units in TCG/DGS files
- P23460: [Crash] Some action pattern in the Multiple Lengths menu causes TomoView to crash
- P23919: Limits not correctly validated for 0 degrees setup.
- P23650: Velocity and delay calibration doesn't work properly
- P23334: Multiple lengths soft C-scan
- P23849: Invalid TCG messages
- P23648: "Zone max. ampl." readings are different if the views are volume corrected or not
- P23883: 3D readings are not giving refracted angles and skews.
- P23862: Cylindrical corrections are failing when the Usound cursor passes the critical angle.
- P23691: It's possible to set two TCG points at the same position
- P22770: Invalid error detection for A-scan peak (pos == amp)
- P23383: Display online A-Scan buffer (conditional inspection)
- P23850: Invalid Multiple length points messages
- P23286: Infinite range cause TomoView to crash
- P23854: 3D Length readings are not all correct
- P23288: If we enter a big range value before changing the resolution, TomoView crashes
- P23559: Reference index offset does not read out and opd files properly.
- P22262: Index offset is not set properly when calculator is in inches
- P24566: Displaying uncorrected S-scan view of 1law crashes
- P24540: Import Export TCG should import export relative to 0 of time base.
- P24541: TCG import/export values should always be half path.
- P24547: Crash when removing context, loading new setups, resetting to default setup.
- P24531: TCG CRASH AVEC MS-5800
- P24475: datagroup is created but no matrix filter is applied (OmniScan data files only)
- P24475: datagroup is created but no matrix filter is applied (OmniScan data files only)
- P24461: Overlay isn't displayed when Measure preference is Imperial.
- P24496: TomoView crashed when trying to create a Gate-S soft C-scan
- P24479: Displayed Gate-S on A-scan doesn't match the longest variable length and isn't always visible.
- P24475: datagroup is created but no matrix filter is applied
- P24461: Overlay isn't displayed when Measure preference is Imperial.
- P24460: Unit type doesn't refresh the Units displayed near Start-End boxes
- P24438: Fix FOCUS LT dependency to version 1.7R9
- P24439: Right click on a Gate load Soft C-scan dialog with Gate type always = Truedepth
- P24437: Crash when starting in acquisition since 2.10B2T8
- P24434: Move Gate-S on A-scan will make next CreateSoftC-scan Dialog Crash
- P24440: Able to active variable backwall on gate A B C D by right clicking on them
- P24429: When switching between groups in the dialog, info is updated from the last group instead of the current group
- P24428: View Properties Overlay Soft C-scan overlay is available for nonVolumeCorrected views

This document is the exclusive property of Olympus NDT inc. No part of this document may be used or reproduced entirely or in part without the prior written consent of Olympus NDT inc.

- P24427: Overlay not Shown when reloading the file
- P24421: Switch to True depth isn't refreshed correctly
- P24420 Displaying wrong Soft Gate length on A-scan
- P24422: Crash when opened from Volumetric merged Datagroup
- P24399: Not all beams are selected when changing group.
- P24396: Switching between Maximum-Crossing or between law-groups doesn't activate de Create button.
- P24326: Can't delete all backwall points together.
- P24324: The Create soft C-scan window won't pop-up if A-scan is not selected.
- P24387: List of point in the table is empty when reloading the software window on selecting another group or law.
- P24332: Clicking on an Available group doesn't refresh the "VariableBackwall" section (List, ActivateCheckbox,B or D) to reflect current state of the group.
- P24331: Activate checkbox isn't remembered.
- P24327: Can't add point on End(D) view without VolumeCorrected.
- P24323: Inaccurate error message description for Update button while not on A-scan view.
- P24323: Fix invalid messages.
- P24313: Fix invalid ultrasound settings start and range.
- P23936: Fix TCG points list refresh problem.
- P24072: TCG error messages in TomoView don't appear with Windows 7
- P23310: Remove second field for "gate saved"
- P23310: Use XML Report 2.0R8T2 for Conditional A-Scan support.
- 23936: TCG control not properly refreshed
- 23920: Soft C-Scan created with multiple lengths does not correspond to soft C-Scan created with regular soft C-Scan tool.
- 23912: Imported TCG file does not support changing range
- 23933: Multiple length file can't be imported if there are no ";" at the end of every lines.
- 23849: Invalid TCG messages.
- 23919: Limits not correctly validated for 0 degrees setup.
- 23914: Able to have negative TCG gain.
- 23883: 3D readings are not giving refracted angles and skews.
- 23983: TCG curve isn't drawn correctly when the last TCG point is outside the upper range limit.
- 23850: Invalid Multiple length points messages.

## 12.18 TomoView 2.9R13

- P19184: Soft C-scan from crossing gate data are not valid when same setting as original gate's values.
- P19185: Problem with pixel representation in C-scan (crossing gate).
- P19415: A-scan view is not matching B-scan view data.
- P21598: New layouts added to project
- P21617: Separation changes to 1000 after setting the value.
- P22206: Print out quality in report is bad (rulers are blurry).

This document is the exclusive property of Olympus NDT inc. No part of this document may be used or reproduced entirely or in part without the prior written consent of Olympus NDT inc.

- P22254: Volumetric Merge (manual tool) not working in French but working in English.
- P23297: Weird error message when closing a "binarized" data file.
- P23591: SOFT GATE EXPORT IN MERGING A01 DOES NOT WORK
- P23728: Customer cannot open A01 file.
- P24128: Bootp configuration is now loaded correctly.
- P24140: C-scan of the second file doesn't show the modifications of his companion

## 12.19 TomoView 2.9R12

- P17120: UT Wedge now have a value in the UtDatabase.mdb for the fields
- P20951: Thickness C-Scan importation does not work.
- P21365: Converter doesn't offer where to put the converted files with multiple files
- P21617: Separation changes to 1000 after setting the value
- P21752: Soft C-scan now works correctly in RF mode.
- P21755: Remove checkbox and reload of option for now
- P22193: Fixing another problem with the "insufficient space disk" message.
- P22206: Print out quality in report is bad (rulers are blurry)
- P22222: Resolve async socket reception in internal clock of A-Scan vs C-scan
- P22253: Convert thickness correctly when using inches
- P22262: Corrected Display and AFiSiMo dialog initialisation of probe offset
- P22271: Export data in RF does not work
- P22338: BUGS LINKED TO INCHES VS MM CONVERSION
- P22476: File in analysis now validate correctly the DDF point limit Use same #define for message ID for TomoView and SetupManager
- P22526: Fix synchro on gate A
- P22530: Remove dialog and add code to check for exception from merge operation
- P22540: Support OmniScanMx2 module
- P22580: Increase static box size only (title problem still present)
- P22590: PassServer.tlb is now registered in the Chinese version of TomoView.
- P22667: wrong behavior of gates if modified from S-Scan
- P22674: Alarms aren't working with OSTV
- P22711: Amplitude axis in sample goes from -128 to +128, it should stop at +127
- P22769: TV takes 100% CPU in release mode with OSTV 3.0D0T29 because of socket error
- P22832: Configuration selection dialog bypass preference not working
- P23020: Support for UT-8 module
- P23103: Wrong TOFD color palette in TomoView
- P23199: Change from pulse/echo sync cause crash
- P23216: Add DDF support for 32/128
- P23629: Fix for corrupted file
- P23641: Type of focus with DDF
- P23645: Wrong offset in drawing of Beam display info.
- P23913: Data is saved even if data corresponding are unchecked

This document is the exclusive property of Olympus NDT inc. No part of this document may be used or reproduced entirely or in part without the prior written consent of Olympus NDT inc.



## 12.20 TomoView 2.9R11

- 21734: 4 Gates in UT mode
- 21723: Dependent Setup
- 22047: Cscan only merge in dependent setup
- 21925: A01 do not merge
- 21949: Autozoom is reset
- 20113: Linear zero index offset
- 21592: DDF on second channel crash
- 22160: Cscan data corruption
- 20691: PassServer translation
- 20717: Adv Cal. Inst. Translation
- 22096: Crash
- 22393: Crash with strip chart
- 22123: Binarizer error
- 22333: SNR crash
- 20951: Thickness on echo cannot be imported
- 22193: Insufficient disk space
- 22195: Index/Scan not refreshed correctly
- 22412: Layout with Dependent Setup

## 12.21 TomoView 2.9R5

- 17097: DGS - Create DGS from TCG curve:
- 17116: Enable roof angle option on UT wedge:
- 17344: Benchmark RPC development with BoundChecker:
- 17552: Version of Windows Vista (64 bits) are not supported:
- 17680: Report: Sound speed displayed in inches/sec.:
- 17693: Uninstall of Adv.Cal. crash when unregistering file PassServer.tlb:
- 17840: Add AFiSiMo paramters in GUI:
- 17892: Delay of element in Pulse-Echo mode is wrong:
- 17948: Optimize when simulation not in all laws of XCal file:
- 17967: Preference dialog do not has its caption translated:
- 18128: Remove scrolling view HASP key validation:
- 18132: The CustomServices.dll cannot be loaded through the RemoteControl library when TomoView 2.8 is installed:
- 18154: Asserts are thrown when trying to load a data file that contains ZoneDiscrimination information.:
- 18159: Weird error message without english text:
- 18307: DGS - ERS reading in AScan vs Cscan ERS are different, one showing "-":
- 18355: Gate are not working in True Depth with "Set Gate" buttons (CRASH):
- 18374: ERS Zone is not giving the maximum ERS but the ERS from the maximum in zone:
- 18375: Changing Scan sequence resets DGS on active channel:

This document is the exclusive property of Olympus NDT inc. No part of this document may be used or reproduced entirely or in part without the prior written consent of Olympus NDT inc.

- 18528: Adv. Cal. crash with a specific setup when trying to open it:
- 18565: TCG is not valid at frequency other than 100 MHZ:
- 18577: Increasing soft gain has an effect position Stacked C-Scan:
- 18636: ERS reading in C-Scan not available with A-Scan video &TCG:
- 18660: Need to be able to change data maximum file size with preference:
- 18661: TV2.9R4: All message dialogs must have a way to be disabled:
- 18662: When TomoView is used by Remote Control, TomoView must not show messages box:
- 18690: Crash on specific setup in linear merge:
- 18696: TCG gain resolution is not same as total resolution:
- 18697: On Japanese PC, PA Cal dialog is cut short on the right:
- 18698: Insert in toolbar the screen capture component:
- 18699: With MS-5800, A-scan video only work for the current view selected:
- 18711: C-scan ERS for ref. and meas. cursor at same position are different:
- 18714: ERS size defect have only one decimal precision:
- 18725: DGS - ERS Zone reading in C-Scan not available with A-Scan video:
- 18753: TomoView Manager tooltip is "Unexpected error occured.":
- 18770: Wrong column header title in TCG:
- 18894: ReportError function ws not returning valid error message:
- 18900: Edit User Field menu stay disable in setup mode:
- 18914: On uTomo, change of range cause applied TCG from DGS to be invalid:
- 18921: TCG from DGS is not valid if range is using start other than zero:
- 18925: On Reset button in DGS dialog, the TCG display is not refreshed:
- 18926: TCG points displayed when done from DGS are not equidistant:
- 18959: DGS - Refresh of ERS in A-scan view causing screen flicker:
- 18960: DGS - TCG points displayed in A-scan view should not be editable:
- 18961: DGS - ERS is changing when gain is modified with TCG created from DGS:
- 18965: DGS - ERS is not taking into account the booster activation correctly:
- 18966: Cannot change the wedge speed on different group without weird behavior:
- 18967: DGS - ERS should be valid even if the TCG applied from DGS is zero:
- 18968: DGS - Only change/lose DGS calibration on specific changes:
- 18969: DGS - Add dialog option for not losing DGS calibration:
- 19036: Hiding TomoView main window in Remote Control:
- 19057: DGS - Booster gain is not used for limit in calibration:
- 19084: ERS info. view with TCG from DGS are not valid with AScan start different then zero:
- 19119: Scrolling View lost data display on mode change from inspection:
- 19120: Add Din support for mode change between setup & inspection:
- 19121: Link gate level to scrolling view first color limit:
- 19122: Add supervisor mode to TomoView:
- 19124: Add maximum in channel option for scrolling view instead of only one law:
- 19125: Analog input are enable on OmniScan unit:
- 19191: UT probe : unmodifiable preset angle:
- 19202: Support DGS reading in online C-scan view as A-scan:

This document is the exclusive property of Olympus NDT inc. No part of this document may be used or reproduced entirely or in part without the prior written consent of Olympus NDT inc.

- 19209: Crash when loading a palette:
- 19212: Need position of amplitude to be valid even if gate not crossed in ScrollingView:
- 19244: Avoid losing threshold level color when deactivated for strip chart:
- 19245: Problem with validation of level in threshold dialog for strip chart:
- 19260: Add minimum value support for PA in Scrolling View:
- 19313: Support Soft-Gate in ScrollingView:
- 19315: Scrolling view type addition & validation modifications:
- 19316: Linear merge for PA group are not working in Scrolling View:
- 19318: Decimation & compression mode support:
- 19321: Missing folder for elementary A-scan creation:
- 19322: Viewer must not contain in the toolbar the zone control:
- 19405: Missing refresh for A-Scan when moving focal law cursor:
- 19432: Empty pane button is not working:
- 19441: Scrolling view color selection limitation are not correct:
- 19451: DGS dual probe curve is not valid at the beginning:
- 19488: Crash with viewer on specific OmniScan (.oud) file:
- 19511: Icon of Adv. Cal. in debug mode is wrong:
- 19512: Problem with importing data file from OmniScan iXU to TomoViewer:
- 19637: Change of beam with shortcut F8/F7 is slower:
- 19690: Add special color support for scrolling view:
- 19723: Problem when loading a iXU 2.1R12T5 data file:
- 19732: "Auto ending" encoder function doesn't work:
- 19756: C-Scan immediately stops when started:
- 19762: TV2.9R4: Error with C-Scan merge for linear file imported with OmniScan Converter:
- 19769: TV2.9R4: Move of gate cause software failure ("Crash"):
- 19778: No trace in scrolling view after gate move in A-scan:
- 19780: Change in order of data in scrolling view corrupt color display:
- 19783: Zone color are set using wrong gate for AMP-TOF view in Scrolling View displays:
- 19821: Moving gate A after loading a specific setup cause application "Crash":
- 19875: Wrong color palette error message (French message):
- 19876: Wrong NO DETECTION color in Scrolling View:
- 19880: NO DETECT color should be replaced for some Scrolling View types:
- 19885: Group Creation Wizard buttons are in the wrong language:
- 19888: When adding a new group, TV passes to acquisition mode:
- 19889: When adding a new group and then a new A-Scan, TV changes all the A-Scans:
- 19893: Alarm cannot be set using gate 4 (D):
- 19896: Compression checkbox is unavailable (not displayed) in some configuration:
- 19963: Set range not working in inches.:
- 19968: TomoView crashes after a certain time on screensaver:
- 19975: TomoView crashes when opening table of measurements after moving gate A:
- 19988: Missing values when loading a .cal file:
- 19992: A-Scan and S-Scan signals are flicking:
- 19993: Wrong index resolution for the merged group:

This document is the exclusive property of Olympus NDT inc. No part of this document may be used or reproduced entirely or in part without the prior written consent of Olympus NDT inc.

- 19994: Scan position incoherence between merged and not merged C-Scans:
- 19996: Display problem (black lines):
- 19998: Problem when merging data files with different resolutions:
- 19999: Problem when merging data files with different angles:
- 20000: Patch at the beginning of merged C-Scans:
- 20004: Log all rpc and socket errors in TomoView:
- 20016: Problem with specific "Data + Layout" files:
- 20018: "No detection" zones become "No data" zones in the merged C-Scan:
- 20031: Problem when merging after having moved gate A:
- 20039: Display doesn't work with some file:
- 20045: Wrong background display for C-Scan merge:
- 20046: Wrong background color for C-Scan merge:
- 20090: When no HASP key present, title of application stay TomoView even if in viewer mode:
- 20094: Signal tearing in the A-Scan while in acquisition mode:
- 20095: Using set range feature on sector Scan does not work if blue cursor is set before red cursor in Time Base:
- 20106: User numbers in the setup vs user numbers from active pods (Multipod):
- 20111: Color dialog need to have controls hidden:
- 20112: C-Scan filter cut gate C & D from list:
- 20119: Velocity type in material is not kept between operation:
- 20144: Viewer layout:
- 20150: Simulation size is too big for display (cannot zoom out enough):
- 20153: Display always unzoom when changing options:
- 20292: Cascading, file save, tile window toolbar need to be removed from viewer mode:
- 20293: Layout of converter OmniScan file should not be loaded into viewer mode:
- 20298: Data (RDT) file pops up error messages when corresponding report (R01) file doesn't exist:
- 20300: Enable in TVManager the button to load layout, activate only the viewer as choice:
- 20317: Default path created are invalid in preference for the palette path:
- 20331: TomoView pops up a message dialog in Standalone mode which prevents automated test

## 12.22 TomoView 2.9R3

- 18307: ERS reading in A-scan vs C-scan ERS are different, one showing "-"
- 18375: Changing Scan sequence resets DGS on active channel
- 18625: DGS Delta Vk is not reset to zero when disable
- 18636: ERS reading in C-Scan not available with A-Scan video & TCG
- 18660: Need to be able to change data maximum file size with preference
- 18696: TCG gain resolution is not same as total resolution
- 18697: On Japanese PC, PA Cal dialog is cut short on the right
- 18698: Insert in toolbar the screen capture component

This document is the exclusive property of Olympus NDT inc. No part of this document may be used or reproduced entirely or in part without the prior written consent of Olympus NDT inc.

- 18699: With MS-5800, A-scan video only work for the current view selected
- 18711: C-scan ERS for ref. and meas. cursor at same position are different
- 18714: ERS size defect have only one decimal precision

## 12.23 TomoView 2.9R2

- 10772 Unable to focus at 0 mm with the first two elements
- 15852 Attenuation label not converted in Imperial
- 15994 Remove useless registry key from installer
- 16514 New channel parameters are wrong
- 16803 Keyboard F1 shortcut does not bring help
- 16807 Wrong error message when the loaded file is not found
- 17030 Default values missing for some edit boxes
- 17065 Advanced Calculator not working in Imperial anymore
- 17116 Enable roof angle option on UT wedge
- 17143 Interleaved Check Box Disappearance
- 17161 Export elementary law cancel button is not managed correctly
- 17222 Beam angles selection is grayed out for beam skew angle
- 17344 Benchmark RPC development with BoundChecker
- 17403 Problem with cylindrical geometry, related to thickness/diameter
- 17404 Setup files error when installing TomoView in another folder than C:\OlympusNDT
- 17405 Problem with bar geometry, value not kept
- 17443 Changing layout with maximized view has no effect
- 17453 Excel info. view are not working
- 17461 iTest development (Remote Control automatic random test unit)
- 17552 Version of Windows Vista (64 bits) are not supported
- 17559 Default.acq error message on first start
- 17680 Report: Sound speed displayed in inches/sec.
- 17682 Duplicate readings in the readings selection dialog
- 17691 Help not working with Adv. Cal. only installation
- 17693 Uninstall of Adv.Cal. crash when unregistering file PassServer.tlb
- 17748 Crash in reporting
- 17754 Stacked Cscan VC (zero degree only) support needed
- 17765 PASSServer is not working with the new HASP drivers
- 17772 Bring back the binarizer
- 17783 Binarizer : Block component with PA data file
- 17798 TV Manager gate value is incorrect with echo synchronization
- 17819 Incredibuilt support needed
- 17823 Reading HR Filter
- 17826 Unable to see pane content when loading a PWZ40 in TV29
- 17840 Add AFiSiMo parameters in GUI
- 17892 Delay of element in Pulse-Echo mode is wrong
- 17897 Loading file with view maximized does not load the layout

This document is the exclusive property of Olympus NDT inc. No part of this document may be used or reproduced entirely or in part without the prior written consent of Olympus NDT inc.

- 17946 Crash when deleting values in the calculator
- 17948 Optimize when simulation not in all laws of XCal file
- 17967 Preference dialog do not has its caption translated
- 17975 AFiSiMo not working with latest PassServer version
- 17981 Indication Table: Additional info crashes with empty view
- 18005 TomoView's main window title only contains the application version but should also contain the name.
- 18051 Converted file cannot be opened immediately after conversion
- 18054 TomoView hangs when trying to close it (must kill process)
- 18055 XmlReportToolbox error message on start
- 18056 Errors messages when opening a data file in Analysis
- 18057 Invalid default number of element used with default probe
- 18058 Calculator hangs when trying to close it (must kill process)
- 18068 Cannot close TV29 anymore, process stay stuck in memory
- 18069 Cannot close AdvCal29 anymore, process stay stuck in memory
- 18070 Permit DGS reading to work with TCG active
- 18071 Angle change in Analysis, angle displayed is 0 in UT
- 18072 Support true depth programming for gate
- 18080 Crash after closing TomoView
- 18103 Crash using scrolling views
- 18128 Remove scrolling view HASP key validation
- 18132 The CustomServices.dll cannot be loaded through the RemoteControl library when TomoView 2.8 is installed
- 18143 Gate Programmation in True Depth cause crash in UT
- 18154 Asserts are thrown when trying to load a data file that contains ZoneDiscrimination information.
- 18159 Weird error message without English text
- 18168 AFiSiMo crashes with the standalone calculator
- 18176 Add possibility in analysis to change offset of a channel
- 18177 Echo dynamics not drawn correctly with 1:1 ratio
- 18178 Help is not appearing when the installation folder is not "C:\OlympusNDT\TomoView29"
- 18213 Add DGS reflector and parameters readings
- 18246 Load of file cause "invalid pointer" dialog to appear
- 18275 Crash with specific client DDF setting
- 18285 TomoView crashes when opening given file.
- 18299 Cannot close and re-open TV when using a MS5800
- 18341 Gate are not programmed correctly from cursor move in VC Scan
- 18342 Crash on display of Soft C-scan
- 18361 Gate threshold is reset when using "Set Gate" buttons
- 18367 Crash reading old acq file
- 18383 VC S-scan & uncorrected S-scan are not always refreshing
- 18389 Minor interface English corrections

This document is the exclusive property of Olympus NDT inc. No part of this document may be used or reproduced entirely or in part without the prior written consent of Olympus NDT inc.

- 18409 PA programming could fail if more than one group
- 18410 Reprogramming channel by adding DDF corrupts S-Scan display
- 18414 Crash upon file opening (multipod)
- 18417 Channel control is not displayed correctly
- 18465 Setting any gate on linear merge data group is causing crashes
- 18495 Evaluate TCG conversion from TV27 to TV29 and list differences
- 18502 HASP key detection is not working for standalone version
- 18512 TomoView crashes when using ERS display with C-scan gate B position C-scan
- 18520 Custom layout cannot be saved in Lite mode
- 18541 TCG resolution is different from previous version

This document is the exclusive property of Olympus NDT inc. No part of this document may be used or reproduced entirely or in part without the prior written consent of Olympus NDT inc.